



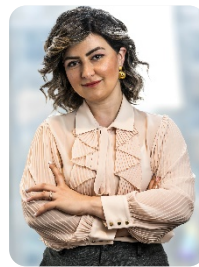
**MIRBAHA
SCHACHNOW LLP**
Canadian Immigration

Business Immigration Programs Canada

Sonia Mirbaha

Principal Partner

www.mandsimmigration.com



Agenda

Business Immigration Programs

- **Intra-company Transferee (ICT)**
- **Labour Market Assessment (LMIA)**
- **Start-up Visa**
- **Alternative Programs**

Services

ICT for Start-up & Large-Scale Corporations

- Eligibility requirements:
 - General requirements for the intra-company transferee
 - Parent-subsidiary relationship between companies
 - Applicant being transferred under the senior managerial position or skilled knowledge
 - Work experience of at least one year in the past 3 years at the parent company
 - Additional requirements for the company
- Application Process and timing
- Work permit



Services

Labour Market Impact Assessment (LMIA)

- Global Talent Stream
 - ❑ Category A and B
 - ❑ Fees and processing time
- High Wage Stream
- Processing times
- Work permit
- Other requirements:
 - ❑ Labour Market Benefits Plan
 - ❑ Recruitment



Services

Start-up Visa Program

- Eligibility requirements:
 - ❑ Qualifying business
 - ❑ Letter of support
 - ❑ Language exam
 - ❑ Proof of financial support
- Other Documents
- Processing times
- Work permit option



Services

Alternative Programs

- PNP Programs



Provincial Nominee Program
of **Canada**

- Express Entry





**MIRBAHA
SCHACHNOW LLP**
Canadian Immigration

Thank You!

Sonia@mandsimmigration.com
Mirbaha Schachnow LLP
3080 Yonge Street, Suite 4065
Toronto ON M4N 3N1
Tel: 647-284-4040
mandsimmigration.com